

OUR VALUES



We believe:

- Each child is precious to God; we consider it our responsibility to provide each child a loving, positive and safe environment.
- The whole child should be nurtured, helping him or her to grow spiritually, intellectually, physically, socially and emotionally.
- Learning should be fun, with hands-on experiences that help develop in each child the belief that he or she is valued as a child of God.
- All children should have the opportunity to learn and develop at their own rate and in their own way.

Bright Beginners Preschool and Infant Care welcomes children of any race, color, gender, national or ethnic origin and extends all rights, privileges, programs and activities generally accorded or made available to children at the Center.

Located near Willowbrook Mall,
one mile east of Methodist Hospital.



14225 Hargrave Road
Houston, TX 77070

Phone: 281-469-2913
Fax: 281-469-2921

E-mail: ContactUs@ThirstyforJesus.org
Website: www.ThirstyforJesus.org/Preschool



BRIGHT BEGINNERS

Preschool and Infant Care



Tel: 281-469-2913
www.ThirstyforJesus.org

OUR CURRICULUM

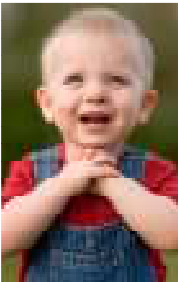
Bright Beginners Preschool and Infant Care offers an age appropriate center-based curriculum for your children.

We use the Comprehensive Infant, Toddler and Preschool Curriculum along with Voyages, a Christian-based curriculum. The Everyday Math Curriculum is also incorporated into the children's learning experience. Each preschool room has centers set up to facilitate the learning through:

- Dramatic Play
- Music
- Sensory Experiences
- Spanish Lessons
- Math
- Reading
- Science
- Writing

Each child will experience individualized, hands-on learning with a focus on social skills that will prepare him/her for kindergarten.

Blessing Time / Chapel



As a Christian owned preschool, we offer Blessing Time Monday through Friday. Music and Bible stories walk the children through the Bible in a year.

Mission project opportunities will be offered during the year for your child to share in.

Outside Play

Preschoolers enjoy a large play house, swings, tricycle path, and field play. Toddlers play on swings, slides, playhouse, climbing bridge, and tree. Infants go cruising around the campus on buggy rides.



INFANT CARE:

BABIES 6 WEEKS TO APPROXIMATELY 18 MOS*
 (*AS SPACE ALLOWS FOR THEM TO BE MOVED
 TO THE PRESCHOOL BUILDING)
 Full-days: 6:30 AM to 6:15 PM
 Part-days: 9:00AM to 3:00 PM

<u>Days per Week</u>	<u>Full-day</u>	<u>Part-Day</u>
4	\$735	\$525
5	\$790	\$580



PRESCHOOL:

Morning Tuition

CHILDREN 2 YEARS TO PRE-K
 From 9:00 AM to 12:00 PM*

*Extended hours available upon request.

Days of the Week

Mon-Wed-Fri	\$185
Tues-Thurs	\$150

Part-Day Tuition

CHILDREN APPROXIMATELY 18 MOS* TO PRE-K
 (*AS SPACE ALLOWS FOR THEM TO BE MOVED
 TO THE PRESCHOOL BUILDING)
 From 9:00AM to 3:00 PM

Days per Week

4	\$475
5	\$515

Full-Day Tuition

CHILDREN 18 MONTHS TO PRE-K
 From 6:30 AM to 6:15 PM

Days per Week

4	\$620
5	\$700



Enrollment & Activity Fee

This is a non-refundable fee based on the number of days per week your child is enrolled.

Tues-Thurs:	\$100
M-W-F:	\$145
Part-Day:	\$190
Full-Day:	\$235

Discounts

We offer several discount incentives for our currently enrolled families.

10% off:	Active St. Timothy Membership
10% off:	Siblings
5% off:	Annual Prepayment of Tuition
\$45 off:	One month's tuition for a 2 or 3 day referral
\$45 off:	Three month's tuition for a 4 or 5 day referral

We are licensed by Texas Dept of Family and Protective Services.

“JESUS SAID TO THEM, ‘LET THE LITTLE CHILDREN COME TO ME, AND DO NOT FORBID THEM; FOR SUCH IS THE KINGDOM OF GOD.’”

Mark 10:14 NIV